

EN

gorenje

INSTRUCTION MANUAL FOR REFRIGERATOR FREEZER



We thank you for the confidence you have shown by purchasing our appliance that is designed to simplify your life. To make the use of the product easier, we have supplied detailed instructions for use, as well as installation instructions supplied on a separate sheet. These instructions should allow you to learn about your new appliance as quickly as possible.

We wish you find a lot of pleasure in its use.

The appliance is intended solely for household use.

The refrigerator is intended for storing fresh food at temperatures above 0 °C.

The freezer is intended for freezing fresh food and for long-term storage of frozen food (up to one year, depending on the type of food).

Please visit our website where you can enter your appliance model number, indicated on the rating plate or the warranty sheet, to find a detailed description of your appliance, tips on use, troubleshooting, service information, instructions for use etc.



<http://www.gorenje.com>



Important safety warning

CONTENTS

4 IMPORTANT NOTES AND PRECAUTIONS	INTRODUCTION
4 SAFETY INFORMATION AND WARNINGS	
11 INSTALLING YOUR NEW APPLIANCE	APPLIANCE DESCRIPTION
13 APPLIANCE DESCRIPTION	
14 CHANGING THE DOOR OPENING DIRECTION	
18 OPERATING THE APPLIANCE	
19 USING YOUR APPLIANCE	
22 HELPFUL HINTS AND TIPS	DEFROSTING AND CLEANING THE APPLIANCE
24 CLEANING AND CARE	
26 TROUBLESHOOTING	MISCELLANEOUS
28 DISPOSAL OF THE APPLIANCE	

IMPORTANT NOTES AND PRECAUTIONS



SAFETY INFORMATION AND WARNINGS

For your safety and correct use, carefully read this user manual, including its hints and warnings, before installing and using the appliance for the first time. To avoid unnecessary mistakes and accidents, it is important to make sure that all people using the appliance are thoroughly familiar with its operation and safety features. Save these instructions and be sure that they remain with the appliance if it is moved or sold, so that anyone using it throughout its life is properly informed about its use and safety notices. For the safety of life and property, observe the precautions in these user's instructions as the manufacturer shall not be responsible for any damage caused by failure to do so.

Safety of children and others who are vulnerable people

According to EN standard

This appliance can be used by children aged from 8 years and above and persons with reduced physical, sensory ,or mental capabilities or lack of experience and knowledge if they have been given supervision or instruction concerning use of the appliance in a safe way and understand the hazards involved. Children shall not play with the appliance. Cleaning and user maintenance shall not be made by children without supervision.

Children aged from 3 to 8 years are allowed to load and unload refrigerating appliances.

According to IEC standard

This appliance is not intended for use by persons (including children) with reduced physical, sensory, or mental capabilities, or lack of experience and knowledge, unless they have been given supervision or instruction concerning use of the appliance by a person responsible for their safety.

- Keep all packaging away from children as there is risk of suffocation.
- If you are discarding the appliance, pull the plug out of the socket, cut the power cord (connection cable) (as close to the appliance as you can) and remove the door to prevent children playing with the appliance from suffering an electric shock or from closing themselves inside it.
- If this appliance, featuring a magnetic door seal, is to replace an older appliance with a spring lock (latch) on the door or lid, be sure to make the spring lock unusable before you discard the old appliance. This will prevent it from becoming a death trap for a child.



General safety

- **WARNING** —This appliance is intended to be used in household and similar applications such as:
 - staff kitchen areas in shops, offices, and other working environments;
 - farmhouses and by clients in hotels, motels, and other residential type environments;
 - bed and breakfast type environments;
 - catering and similar non-retail applications.

- WARNING — Do not store explosive substances such as aerosol cans with a flammable propellant in this appliance.
- WARNING — If the power cord is damaged, it must be replaced by the manufacturer, his service agent, or a similarly qualified person in order to avoid a hazard.
- WARNING — Keep ventilation openings in the appliance enclosure or in the cabinet the appliance is built into clear of obstruction.
- WARNING — Do not use mechanical devices or other means to accelerate the defrosting process, except for those recommended by the manufacturer.
- WARNING — Do not damage the refrigerant circuit.
- WARNING — Do not use electrical appliances inside the food storage compartments of the appliance, unless they are of the type recommended by the manufacturer.
- WARNING — The refrigerant and insulation blowing agent (gas) are flammable. When disposing of the appliance, do
 - so only at an authorized waste disposal centre. Do not expose to flame.
- WARNING — When positioning the appliance, ensure the supply cord is not trapped or damaged.
- WARNING — Make sure there is not a power strip or a portable power supply behind the appliance.

Replacing the LED

- WARNING — The LED light must not be replaced by the user! If the LED light is damaged, contact the customer helpline for assistance.

Refrigerant

The refrigerant isobutene (R600a) is contained within the refrigerant circuit of the appliance. It is a natural gas

with a high level of environmental compatibility, which is nevertheless flammable.

During transportation and installation of the appliance, make sure that none of the components of the refrigerant circuit are damaged.

The refrigerant (R600a) is flammable.

- **WARNING** — Refrigerators contain refrigerant, and gases in the insulation. Refrigerant and gases must be disposed of professionally as they may cause eye injuries or ignition. Ensure that refrigerant circuit tubing is not damaged prior to proper disposal.



WARNING! Risk of fire/flammable materials.

If the refrigerant circuit is damaged:

- Avoid opening flames and sources of ignition.
- Thoroughly ventilate the room in which the appliance is located.

It is dangerous to alter the specifications or modify this product in any way.

Any damage to the cord may cause a short circuit, fire, and/or electric shock.



Electrical safety

- The power cord must not be lengthened.
- Make sure that the power plug is not crushed or damaged. A crushed or damaged power plug may overheat and cause a fire.
- Make sure that you can access the mains plug of the appliance.
- Do not pull the mains cable.

- If the mains socket is loose, do not insert the power plug. There is a risk of electric shock or fire.
- Do not operate the appliance if the interior lighting lamp cover is not in place.
- The fridge may only be connected to single-phase power supply alternating current at 220-240 V/50 Hz. If fluctuation of voltage in the user's district is so high that the voltage exceeds the above range, for safety reasons, be sure to install an AC automatic voltage regulator with a rating of more than 350 W on the fridge power supply line. The fridge must employ a special power socket instead of common one with other electric appliances. Its plug must match the socket with ground wire.

Daily use

- Do not store flammable gases or liquids in the appliance. There is a risk of an explosion.
- Do not operate any electrical appliances in the appliance (e.g., electric ice cream makers, mixers etc.).
- When unplugging, always pull the plug from the mains socket; do not pull on the power cord.
- Do not place hot items near the plastic components of this appliance.
- Do not place food products directly against the air outlet on the rear wall.
- Store pre-packed frozen food in accordance with the frozen food manufacturer's instructions.
- The appliances manufacturer's storage recommendations should be strictly complied with. Refer to relevant instructions for storage.
- Do not place carbonated or fizzy drinks in the freezer compartment. The increased pressure in the container may cause it to explode, resulting in damage to the appliance.
- Frozen food can cause ice burns (frostbite) if consumed straight from the freezer compartment.

- Do not place the appliance in direct sunlight.
- Keep burning candles, lamps, and other items with naked flames away from the appliance to avoid setting the appliance on fire.
- The appliance is intended for keeping food and/ or beverages in normal household, as explained in this instruction booklet. The appliance is heavy. Care should be taken when moving it.
- Do not remove nor touch any items from the freezer compartment if your hands are damp or wet as this could cause skin abrasions or ice burns (frostbite).
- Never stand on the base, drawers, doors etc. or use them as supports.
- Frozen food must not be refrozen once it has been thawed.
- Do not consume ice popsicles or ice cubes straight from the freezer as this can cause ice burns (frostbite) to the mouth and lips.
- To prevent items from falling and causing injury or damage to the appliance, do not overload the door racks or put too much food in the crisper drawers.
- WARNING - Food must be packed into bags before it is put into the refrigerator. Liquids must be stored in bottles or capped containers to avoid spilling. Due to its design and structure, the product is not easy to clean.

Caution!

Care and cleaning

- Before maintenance, switch off the appliance and disconnect the mains plug from the mains socket.
- Do not clean the appliance with metal objects, steam cleaner, essential oils, organic solvents, or abrasive cleansers.
- Do not use sharp objects to remove frost from the appliance. Use a plastic scraper.

Important notes regarding installation!

- When connecting the appliance to power supply, carefully follow the instructions in this manual.
- Unpack the appliance and check for any damage. Do not connect the appliance if it is damaged. Report any damage immediately to the place where you bought the appliance. In this case, retain the packaging.
- It is advisable to wait at least four hours before connecting the appliance to allow the oil to flow back into the compressor.
- Ensure adequate air circulation around the appliance. Lack of air circulation could lead to overheating. To achieve sufficient ventilation, follow the installation instructions. Wherever possible, the back of the product should not be too close to a wall to avoid touching or catching warm parts (compressor, condenser) and therefore to prevent a risk of fire. Follow the installation instructions.
- The appliance must not be located close to radiators or cookers.
- Make sure that the mains plug is accessible after the appliance is installed.

Service

- Any electrical work required as part of servicing of the appliance should be carried out by a qualified electrician or a similarly competent person.
- This product must be serviced by an authorized Service Centre, and only genuine spare parts must be used.
 - 1) If the appliance is Frost Free.
 - 2) If the appliance contains freezer compartment.

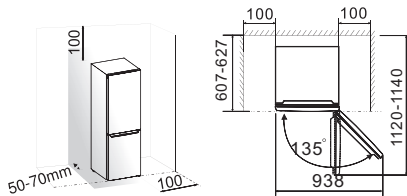
INSTALLING YOUR NEW APPLIANCE

- Before using the appliance for the first time, please review the following tips.

Ventilation of appliance

In order to improve efficiency of the cooling system and save energy, it is necessary to maintain good ventilation around the appliance to allow dissipation of heat. For this reason, there should be sufficient clearance around the refrigerator.

Suggestion: It is advisable to leave 50–70 mm of space from the back to the wall, at least 100 mm above the appliance, at least 100 mm from its sides to the wall, and to leave a clear space in front of the appliance to allow the doors to open to a 135° angle. Please see the following diagrams.



Note:

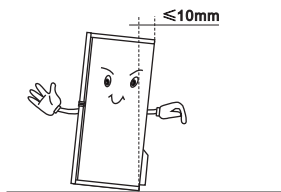
- This appliance performs well in the climate class from N to ST. It may not work properly if it is left at a temperature above or below the indicated range for a long period.

Class	Temperature
SN	from +10 °C to +32 °C
N	from +16 °C to +32 °C
ST	from +16 °C to +38 °C
T	from +16 °C to +43 °C

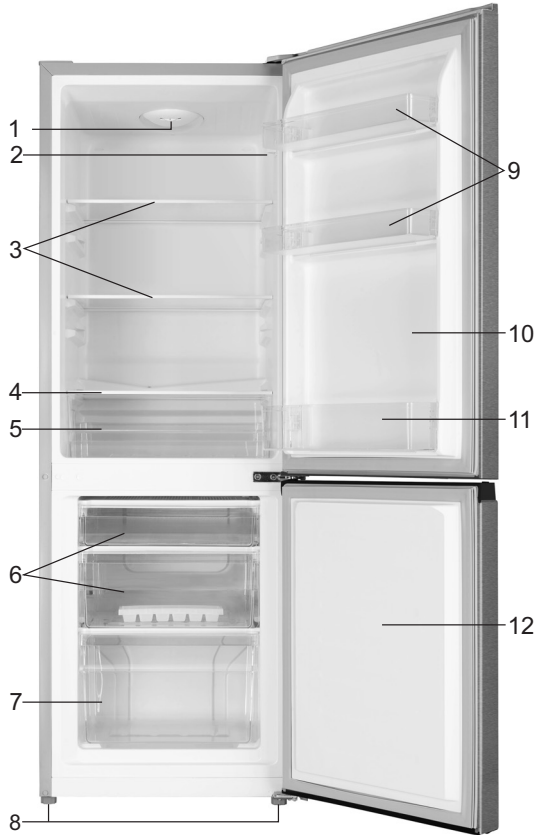
- Stand you appliance in a dry place to avoid damage due to excessive moisture or humidity.
- Keep the appliance out of direct sunlight, rain, or frost. Stand the appliance away from heat sources such as stoves, fires, or heaters.

Levelling of the appliance

- For levelling and sufficient air circulation in the lower rear section of the appliance, the bottom feet may need to be adjusted. You can adjust them by hand or using a suitable spanner.
- To allow the door to self-close, tilt back the top backwards by about 10 mm.



APPLIANCE DESCRIPTION



1. Controller box and LED light
2. Door switch
3. Shelf
4. Crisper box cover
5. Crisper drawer
6. Freezer upper drawer

7. Freezer lower drawer
8. Adjustable bottom feet
9. Upper door racks
10. Refrigerator door
11. Lower door rack
12. Freezer door

Note: Due to continuous modification of our products, your refrigerator may be slightly different than depicted in this instruction manual, but its functions and methods of use remain the same. For more space in freezer, you can remove the drawers (except the bottom freezer drawer) and the ice tray.

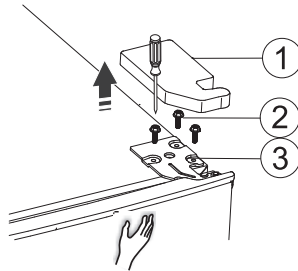
CHANGING THE DOOR OPENING DIRECTION

If required by the installation site, the side at which the door opens can be changed from right (as supplied) to left.

Warning! When reversing the door, the appliance must not be connected to the mains. Ensure that the plug is removed from the mains socket.

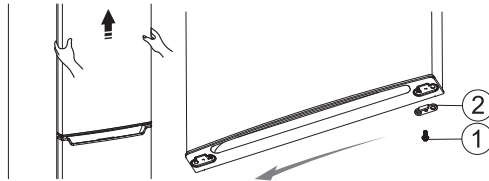
Note: Before you start laying the refrigerator on its back in order to gain access to the base, you should rest it on soft foam packaging or a similar material to avoid damaging the refrigerator's backboard. To reverse the door, the following steps are generally recommended.

1. Stand the refrigerator upright. Open the upper door to take out all door racks (to avoid any damage to the racks), then close the door.
2. Remove the upper hinge cover (right) (1), remove the screws (2), and remove part (3). Put the part (1) that you have just detached back into the plastic bag. Put screws (2) and part (3) aside for later use.

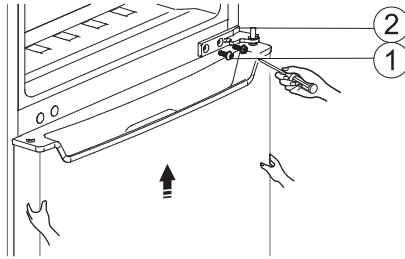


Note: Please hold the upper door by hand during step 2 to prevent the door from dropping.

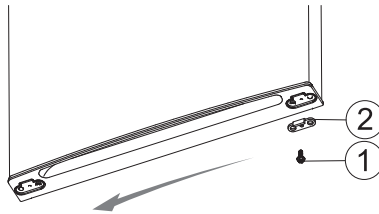
3. Remove the upper door and place it on a smooth surface with its panel upwards. Loosen screws (1) and remove part (2). Then, install part (2) to the left side using the screws (1).



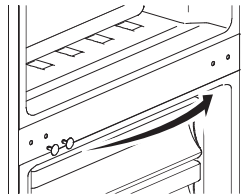
4. Loosen screws (1) used to fix the middle hinge (2) and remove the middle hinge (2). Then, remove the bottom door.



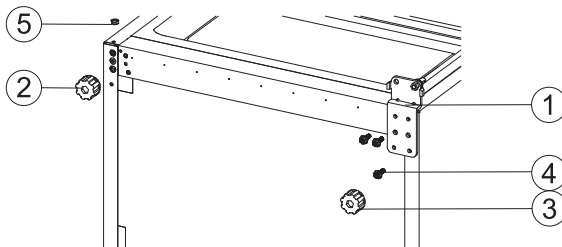
5. Place the bottom door on a smooth surface with its panel upwards. Loosen screws (1) and remove part (2). Then, install part (2) on the left side, using the screws (1).



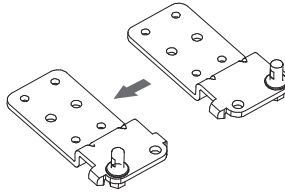
6. Move the screw hole covers on middle cover plate from left to right (as shown in figure below).



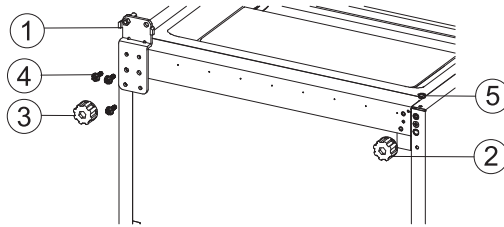
7. Place the refrigerator horizontally. Remove part (3), then loosen the screws (4). Remove parts (5), (2), and (1).



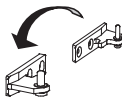
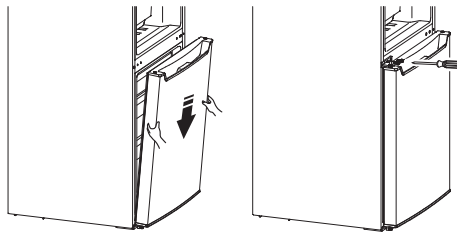
8. Undo the bottom hinge, move the plug to the adjacent hole, and replace the hinge on the opposite side.



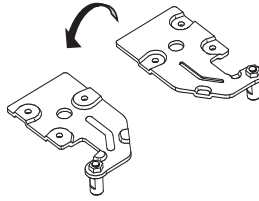
9. Repeat step 7 in the opposite direction: move part (1) to the left; move parts (2) and (5) to the right; and fix part (1) with screws (4). Finally, reinstall part (3).



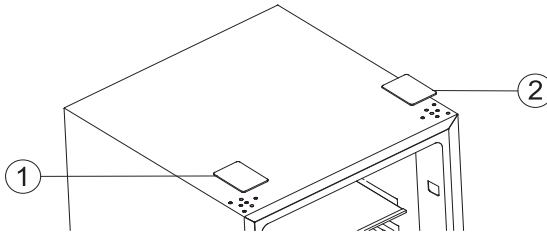
10. Move the bottom door and adjust its position to align the bottom hole with top hinge axis. Turn the middle hinge by 180°, adjust the middle hinge to the appropriate position, and then install it.



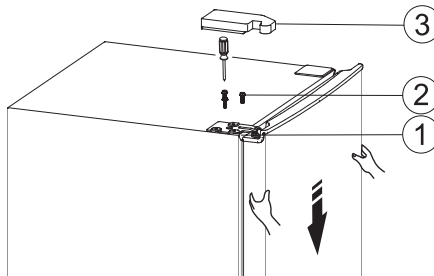
11. Undo (unscrew) the upper hinge axis, flip the upper hinge over, and replace the axis. Then place it aside as you will need it later on.



12. Remove the screw hole cover (1) and replace it on the right side (2) as shown in the figure below.



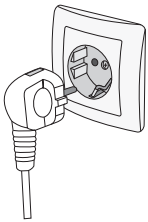
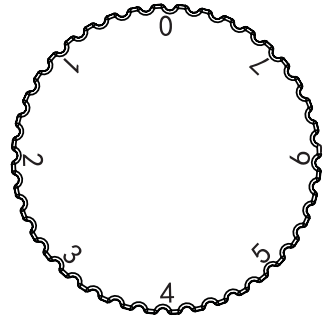
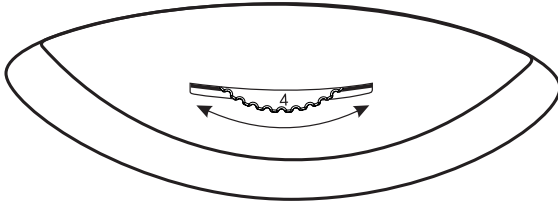
13. Move the top door to appropriate position. Adjust part (1) and top door, then fix part (1) using screws (2) (please hold the top with your hand when installing), and install part (3) (from the plastic bag) that fits the left side.



Note: When installing part (3), first, push it from left to right as far as it will go, then push it down firmly.

14. Open the top door, mount the door racks, and close the door.

OPERATING THE APPLIANCE



Insert the plug of the power cord into a socket with a protective earth contact. When the refrigerator compartment door is opened, the internal lighting is switched on. After the fridge has been placed in position, wait for 5 minutes before connecting it to power mains. Don't store anything in the fridge until the temperature inside is low enough.

The temperature selector knob is located at the top of the refrigerator compartment.

Setting 0 means: Off.

Rotate the knob clockwise to turn on the appliance.

Setting 1 means: Highest temperature, warmest setting.

Setting 7 (end-stop) means: Lowest temperature, coldest setting.

Important! Under normal circumstances, we recommend setting the temperature control knob between 2 and 4. If you wish a higher or lower temperature, please turn the knob to warmer or colder setting accordingly. When the knob is on colder settings, energy consumption may be higher. On warmer settings, power consumption is lower.

Important! High ambient temperatures (e.g., on hot summer days) and a cold setting (position 6 to 7) may cause the compressor to run continuously or even non-stop!

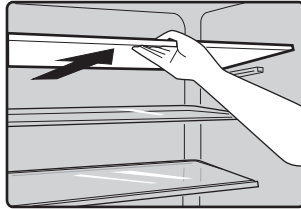
Reason: when the ambient temperature is high, the compressor must run continuously to maintain the low temperature in the appliance.

USING YOUR APPLIANCE

Accessories

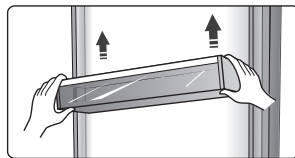
Movable shelves/trays

- Various glass or plastic storage shelves or wire trays are included with your appliance - different models have different combinations and different models have different features.
- The walls of the refrigerator are equipped with a series of runners so that the shelves can be positioned as desired.



Positioning the door shelves

- To permit the storage of food packages of various sizes, the door shelves can be placed at different heights.
- To adjust, gradually pull the shelf in the direction of the arrows until it comes free, then reposition as required.



Vegetable drawer

- The drawer is suitable for storing fruit and vegetables.

Refrigerator compartment

- For storing the food that does not need to be frozen, and different kinds of food.

Freezer compartment

- For freezing fresh food and storing frozen and deep-frozen food for a long time.

Thawing food

- In the refrigerator compartment
- At room temperature
- In a microwave oven
- In a convection oven
- Food once thawed should not be refrozen, except for a few exceptions.

Ice-cube tray

For making ice and storing ice-cubes.

To avoid contamination of food, please observe the following instructions:

- Opening the door for long periods can cause a significant increase of the temperature in the compartments of the appliance.
- Regularly clean the surfaces that can come into contact with food, and accessible drainage systems.
- Store raw meat and fish in suitable containers in the refrigerator, so that they are not in contact with or drip onto other food.
- Two-star frozen-food compartments are suitable for storing pre-frozen food, storing, or making ice cream, and making ice cubes.
- One-, two- and three-star compartments are not suitable for freezing fresh food.

Order	Compartments TYPE	Target storage temp.[°C]	Appropriate food
1	Fridge	+2 ≤ +8	Eggs, cooked food, packaged food, fruits and vegetables, dairy products, cakes, drinks and other food that is not suitable for freezing.
2	(***)* - Freezer	≤ -18	Seafood (fish, shrimp, shellfish), freshwater aquatic products, and meat products (recommended time is 3 months - nutritional values and taste decrease with time); suitable for freezing fresh food.
3	** - Freezer	≤ -18	Seafood (fish, shrimp, shellfish), freshwater aquatic products, and meat products (recommended time is 3 months - nutritional values and taste decrease with time). Not suitable for freezing fresh food.
4	* - Freezer	≤ -12	Seafood (fish, shrimp, shellfish), freshwater aquatic products, and meat products (recommended time is 2 months - nutritional values and taste decrease with time). Not suitable for freezing fresh food.

5	* - Freezer	≤ -6	Seafood (fish, shrimp, shellfish), freshwater aquatic products, and meat products (recommended time is 1 month - nutritional values and taste decrease with time). Not suitable for freezing fresh food.
6	0 star	$-6 \leq 0$	Fresh pork, beef, fish, chicken, some packaged processed foods etc. (Recommended to eat within the same day, preferably not later than 3 days.) Partially packed/wrapped up encapsulated processed foods (non-freezable foods)
7	Chill	$-2 \leq +3$	Fresh/frozen pork, beef, chicken, freshwater aquatic products etc. (7 days below 0 °C; above 0 °C, it is recommended to consume the food within that day, preferably no more than 2 days.) Seafood (less than 0 for 15 days; it is not recommended to store above 0 °C)
8	Fresh Food	$0 \leq +4$	Fresh pork, beef, fish, chicken, cooked food, etc. (Recommended to eat within the same day, preferably no more than 3 days.)
9	Wine	$+5 \leq +20$	Red wine, white wine, sparkling wine etc.

Note: please store different foods according to the compartments or target storage temperature of your purchased products.

- If the refrigeration appliance is left empty for long periods, switch it off, defrost, clean, dry, and leave the door open to prevent mould from developing inside the appliance.

HELPFUL HINTS AND TIPS

Energy saving tips

We recommend that you heed the tips below to save energy.

- Try to avoid keeping the door open for long periods.
- Ensure the appliance is away from any sources of heat (direct sunlight, electric oven, or cooker etc.)
- Don't set the temperature colder than necessary.
- Don't store warm food or evaporating liquid in the appliance.
- Place the appliance in a well ventilated room with low humidity. Please refer to chapter »Installing your new appliance«.
- The diagram shows the optimum combination for the drawers, crisper, and shelves. Unless necessary, do not adjust the combination as this is the most energy-efficient configuration.

Hints for refrigeration

- Do not place hot food directly into the refrigerator or freezer as this will increase the internal temperature, resulting in the compressor having to operate more intensely and in turn consuming more energy.
- Do cover or wrap the food, particularly if it has a strong flavour.
- Place the food properly so that air can circulate freely around it.
- Meat: wrap all types of meat in cling film and place it on the glass shelf above the vegetable drawer. Always observe food storage times and use by dates suggested by manufacturers.
- Cooked food, cold dishes etc.: they should be covered and may be placed on any shelf.
- Fruit and vegetables: they should be stored in the special drawer provided.
- Butter and cheese: should be wrapped in airtight foil or plastic film wrap.
- Milk bottles: should have a lid and be stored in the door racks.

Hints for freezing

- When first starting up or after a period out of use: before putting the food in the compartment, let the appliance operate for at least 2 hours at a higher setting.
- Prepare food in small portions to allow rapid and complete freezing, and to allow thawing only the quantity required.
- Wrap the food in aluminium foil or cling film and make sure that the packages are airtight.
- Do not allow fresh unfrozen food to touch the food that is already frozen as this would lead to rise in the temperature of the latter.
- Consuming frozen products immediately after removal from the freezer compartment could cause ice burns (frostbite).
- It is recommended to label and date each frozen package to keep track of the storage time.

Hints for storing frozen food

- Make sure that commercially frozen food was properly stored by the retailer.
- Once defrosted, food deteriorates rapidly and cannot be re-frozen.
- Do not exceed the storage period indicated by the food manufacturer.
Note: if the appliance contains related accessories and functions.

CLEANING AND CARE

For hygienic reasons, the appliance interior, including interior accessories, should be cleaned regularly. The appliance should be cleaned and maintained at least every two months.

Warning!

The appliance should not be connected to the main power supply during cleaning. Before cleaning, switch off the appliance and remove the plug from the mains socket, or switch off/shut off the circuit breaker, or remove the fuse.

Notice!

- Remove the food from the appliance before cleaning. Store it in a cool place and keep well covered.
- Never clean the appliance with a steam cleaner. Moisture could accumulate in electrical components.
- Hot vapours can damage the plastic parts.
- Essential oils and organic solvents can damage plastic parts, e.g., lemon juice or oils from an orange peel, butyric acid, or cleaners that contain acetic acid.
- Do not use any abrasive cleaners.
- Clean the appliance and the interior accessories with a cloth and lukewarm water. Commercially available dishwashing detergents may also be used.
- After cleaning, wipe with fresh water and a clean dish cloth.
- Accumulation of dust on the condenser unit increases energy consumption; clean the condenser at the back of the appliance once a year with a soft brush or a vacuum cleaner. (Only for models with an outside/exterior condenser.)
- Check the water drain hole on the rear wall of the refrigerator compartment.
- Clear a blocked drain hole with a straw or a similar object, but be careful not to damage the cabinet with any sharp objects.
After everything is dry, put the appliance back into service.

Defrosting

Defrosting the fresh food storage compartment

- The fresh food storage compartment will be defrosted automatically. Water will be drained through a drainpipe at the back of the appliance onto a drip tray.

Defrosting the frozen food storage compartment

- The freezer chamber must be defrosted manually. Before defrosting, remove the food from the compartment.
- Remove the ice tray and drawers or put them into the fresh food compartment temporarily.
- Set the knob of the temperature regulator to "0" (where the compressor will stop operating) and leave the door of the refrigerator open until ice and frost melt completely and accumulate at the bottom of the freezer chamber. Wipe out the water with a soft cloth.

- To speed up the defrosting process, you may put a bowl of warm water (about 50 °C) into the freezer chamber and scrape away the ice and frost with a defrosting spatula. After doing so, be sure to set the knob of the temperature regulator back to the original position.
- It is not advisable to heat the freezer chamber directly with hot water or a hair dryer while defrosting as this could cause deformation of the inner case.
- It is also not advisable to scrape off ice and frost or separate foods from the containers which have been congealed together with the food, using sharp tools or wooden bars, so as not to damage the inner casing or the surface of the evaporator.

Warning! To switch off the appliance before defrosting, turn the temperature regulator to the “0” position.

Notice! The appliance should be defrosted at least once a month. If the door is opened frequently or if the appliance is used in a place with extremely high humidity, we recommend defrosting every two weeks.

Taking the appliance out of service

- Empty the appliance.
- Pull out the power plug.
- Clean thoroughly (see section: Cleaning and Care).
- Leave the door open to prevent odours.

TROUBLESHOOTING

If you experience a problem with your appliance or are concerned that the appliance is not functioning correctly, you can carry out some easy checks before calling for service; please see below. You can carry out some easy checks according to this section before calling for service.

Warning! Don't try to repair the appliance yourself. If the problem persists after you have made the checks mentioned below, contact a qualified electrician, authorized service engineer, or the shop where you purchased the product.

Problem:	Possible cause & solution
Appliance is not working correctly	<ul style="list-style-type: none">• Check whether the power cord is plugged into the power outlet properly.• Check the fuse or circuit of your power supply; replace if necessary.• The ambient temperature is too low. Try setting the chamber temperature to a colder level to solve this problem.• It is normal that the freezer is not operating during the automatic defrost cycle, or for a short time after the appliance is switched on, to protect the compressor.
Odours from the compartments	<ul style="list-style-type: none">• The interior may need to be cleaned.• Some food, containers, or wrapping is causing odours.
Noise from the appliance	<p>The sounds below are quite normal:</p> <ul style="list-style-type: none">• Compressor running noises.• Air movement noise from the small fan motor in the freezer compartment or other compartments.• Gurgling sound similar to water boiling.• Popping noise during automatic defrosting.• Clicking noise before the compressor starts. <p>Other unusual noises are due to the reasons below and may need you to check and take action:</p> <ul style="list-style-type: none">• The cabinet is not level.• The back of appliance is touching the wall.• Bottles or containers are knocking against each other.

Problem:	Possible cause & solution
The motor runs continuously	<p>It is normal to frequently hear the motor. It will need to run more under the following circumstances:</p> <ul style="list-style-type: none"> • Temperature setting is set colder than necessary. • Large quantity of warm food has recently been stored in the appliance. • The temperature outside the appliance is too high. • Doors are opened too often or kept open too long. • After you have installed the appliance or after it has been switched off for a long time.
A layer of frost occurs in the compartment	<ul style="list-style-type: none"> • Check that the air outlets are not blocked by food and make sure the food is placed in the appliance to allow sufficient ventilation. Ensure the door can be fully closed. To remove the frost, please refer to the chapter on cleaning and care.
Temperature inside is too warm	<ul style="list-style-type: none"> • You may have opened the door too frequently or left the door open too long; or the door is kept open by some obstacle; or the clearance at the sides, back and top of the appliance is insufficient.
Temperature inside is too cold	<ul style="list-style-type: none"> • Increase the temperature as described in the chapter "Display controls".
Doors can't be closed easily	<ul style="list-style-type: none"> • Check whether the top of the refrigerator is tilted back by 10–15 mm to allow the doors to self-close. Also, check if something inside the compartment is preventing the door from closing.
Water drips on the floor	<p>The water pan/tray (located at the rear bottom of the cabinet) may not be properly levelled, or the draining spout underneath the top of the compressor depot may not be properly positioned to direct water into this pan, or the water spout is blocked, or the water spout is not fully inserted into the connector. You may need to pull the refrigerator away from the wall to check the pan and spout and connector.</p> <ul style="list-style-type: none"> • Check if the refrigerator has been powered off for a long time. This may cause the ice in the bucket to melt into water, and flow to the floor
LED lighting does not work:	<ul style="list-style-type: none"> • If the LED lighting does not work, call a service technician. • Do not attempt a repair of the LED lighting yourself, as there is danger of contact with high voltage!

DISPOSAL OF THE APPLIANCE

It is prohibited to dispose of this appliance as household waste.


Packaging materials

Packaging materials with the recycle symbol are recyclable. Dispose of the packaging in a suitable waste collection container for recycling.

Before disposal of the appliance

1. Pull out the mains plug from the mains socket.
2. Cut off the power cord and discard with the mains plug

Warning! Refrigerators contain refrigerant and gases in the insulation. Refrigerant and gases must be disposed of professionally as they may cause eye injuries or ignition. Ensure that the refrigerant circuit tubing is not damaged prior to proper disposal.

	CORRECT DISPOSAL OF THIS PRODUCT
	The symbol on the product or its packaging indicates that the product should not be treated as normal household waste. The product should be taken to an authorized collection centre for waste electric and electronic equipment processing. Correct disposal of the product will help prevent any negative effects on the environment and health of people which could occur in case of incorrect product removal. For detailed information on removal and processing of the product, please contact the relevant municipal body in charge of waste management, your waste disposal service, or the store where you bought the product.

Gorenje, d.o.o.

Partizanska 12

SI - 3320 Velenje, Slovenija

info@gorenje.com

www.gorenje.com